

# GLS CAMPUS BERLIN EVENT LOCATION

**GLS CAMPUS BERLIN** is a unique event location at the heart of Berlin's trendy Prenzlauer Berg district. It is one of the city's most distinguished venues.

The campus offers everything you need: **spacious seminar rooms, two hotels, the Restaurant Oderberger as a dinner location and a truly spectacular location** – the historic baths of the **Stadtbad Oderberger**.

Whether for 10, 50 or 600 people – with its state-of-the-art facilities and equipment, central location and highly attractive campus, **GLS CAMPUS BERLIN** is the perfect setting for your **conference, seminar, convention or private celebration**.

We offer various room sizes to fit your event: from seminar and workshop rooms to the larger Lounge and Auditorium. You can book a combination of rooms tailored to your event. In warmer weather, it is also possible to include our lovely, park-like outdoor facilities for catering or breaks. Many of our rooms directly face our garden.

Choose your personal catering preferences and book them as individual orders or all-inclusive packages.

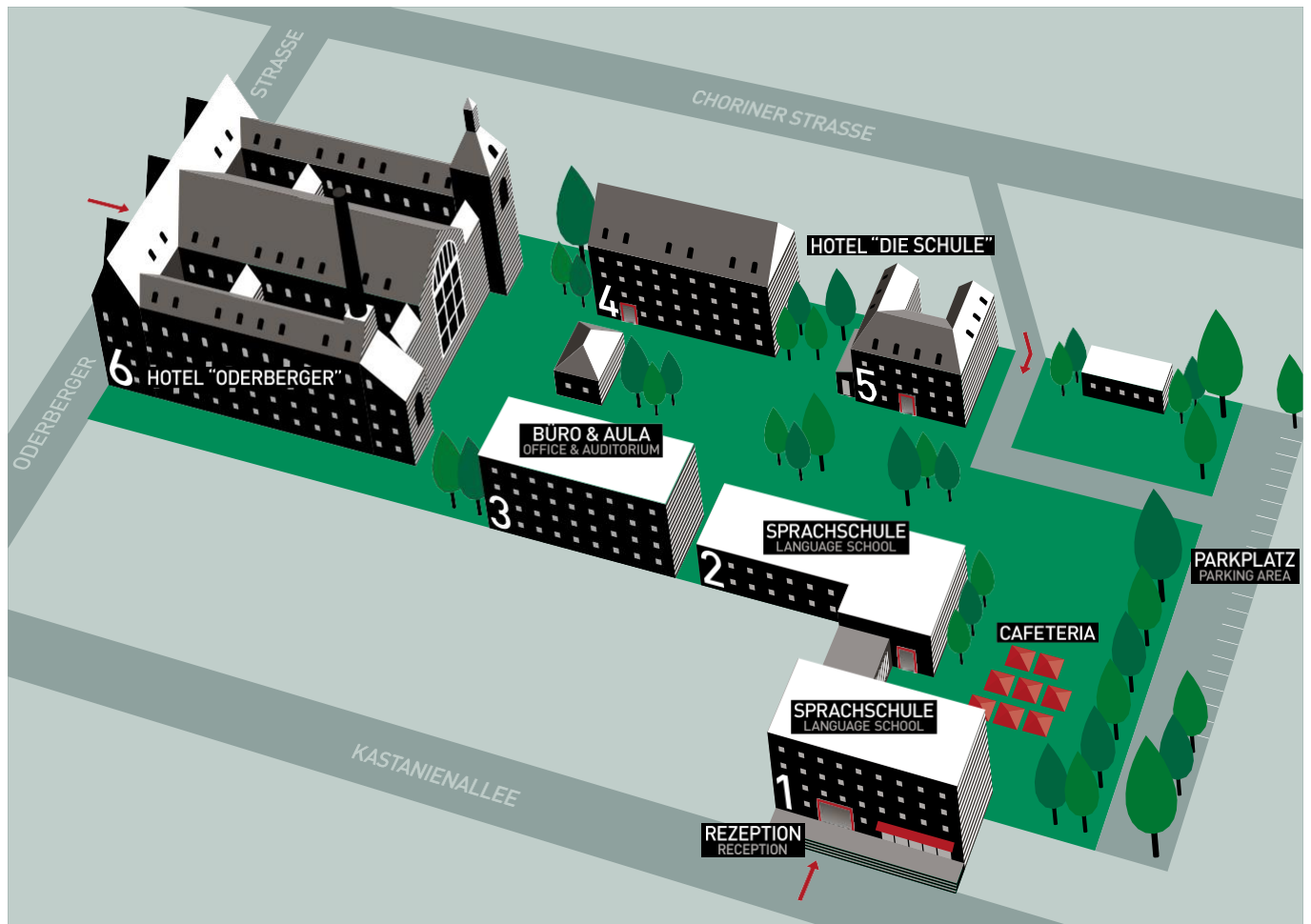
**GLS CAMPUS BERLIN** is equipped with state-of-the-art technology, which we set up to fit your event. It is possible to realize hybrid or digital events too.

In this folder, you can find detailed information and conference options including all available rooms.





## ABOUT GLS



**GLS CAMPUS BERLIN** is home to the GLS German Language School Berlin – a language travel agency and language school all in one. It was founded in 1983 by entrepreneur Barbara Jaeschke.

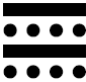
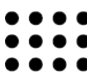




The language school on GLS Campus attracts more than 6000 course participants per year, 80 % of which are international students who come to Berlin to learn German. GLS German Language School is a five-time winner of the Star School Germany award by London-based Study-Travel Magazine. Whether English, Spanish, French or Mandarin, general language or specialized language courses such as legal English – GLS has more than 30 years of experience.

### HISTORY

The GLS Campus is a revitalized ensemble of historic buildings first laid out in 1886, including a public bath house and adjoining municipal school (see illustration). The public baths (Stadtbad Oderberger) were closed in 1986 due to damage in the basin and remained so for the next 30 years. After the municipal school was shut in 2004, GLS acquired the building in 2005 and began to bring life to the GLS vision – a language school and event location modeled after English colleges, with its own accommodation and cafeteria. The campus' highlight, Hotel Oderberger, was designed by architect Ludwig Hoffmann as a public bath house in 1898. In 2012, GLS began to renovate the listed historic building and in January 2016, boutique Hotel Oderberger Berlin officially opened.



## OVERVIEW OF AVAILABLE ROOMS

ROOM	SIZE							RENTAL HIGH SEASON (MAY-JUN + SEP-NOV)	RENTAL LOW SEASON
111	39	20	30	25	16	20	18	500 €	350 €
123	47	22	35	30	22	26	24	600 €	450 €
129	48	22	35	30	22	26	24	600 €	450 €
121	54	30	45	40	24	30	26	700 €	500 €
112	63	45	50	45	30	37	34	800 €	550 €
Lounge	107	70	120	60	50	62	55	1400 €	950 €
Auditorium	165	120	220	100	50	62	60	2100 €	1500 €
Library	60	40	50	35	24	36	24	1000 €	700 €
611	20	-	22	15	-	-	8	400 €	250 €
612	18	-	22	15	-	-	8	400 €	250 €
Class Rooms*	30							400 €	270 €

\*available on weekends only

**20%**

Discount with the code "SmartMeetings".  
 For bookings on Mondays or Fridays,  
 as well as for bookings of events lasting several days on weekdays (not on weekends)

**50%**

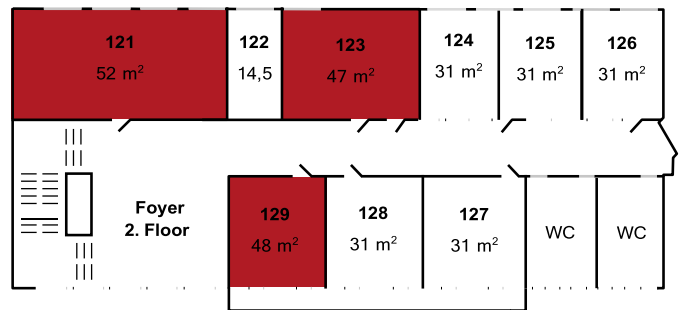
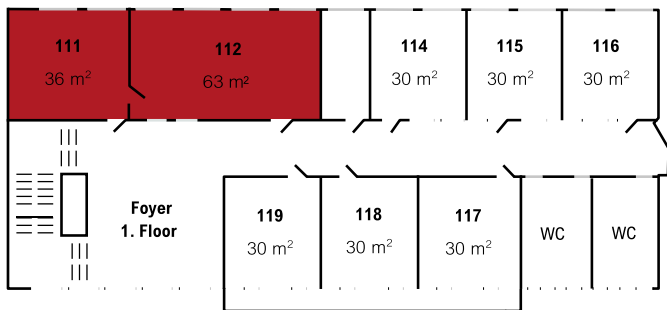
Discount with the code „LateMeetings“  
 For bookings of meetings, conferences, lectures etc. in our rooms after 6 p.m.  
 This does not apply to receptions, evening events, private parties or similar.



# HOUSE 1



Our seminar rooms are between 14 m<sup>2</sup> and 63 m<sup>2</sup>. Other rooms are available on weekends only.



ROOM	QM							RENTAL HIGH SEASON (MAY-JUN + SEP-NOV)	RENTAL LOW SEASON	
111	39	6,7 x 5,8 M	20	30	25	16	20	18	500 €	350 €
123	47	8 x 5,8 M	22	35	30	22	26	24	600 €	450 €
129	48	8,1 x 8,8 M	22	35	30	22	26	24	600 €	450 €
121	54	9,1 x 5,8 M	30	45	40	24	30	26	700 €	500 €
112	63	6 x 10,5 M	45	50	45	30	37	34	800 €	550 €

1. and 2. floor Foyer  
This public area is used as a catering area. There is a possibility to use some m<sup>2</sup> as exhibition space. Contact us for more information

Room equipment  
The room rental includes a whiteboard incl. markers, magnetic strips, pens and pads for your participants, presentation technology (beamer or smartboard depending on the room), cleaning before and after the event and waste disposal.



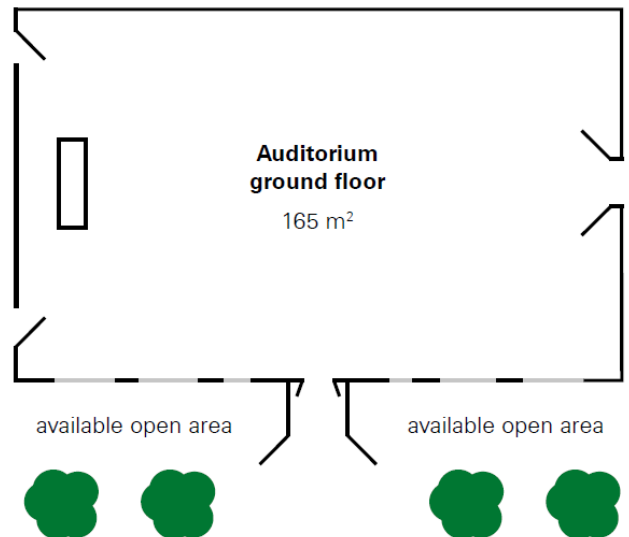
# AUDITORIUM, HOUSE 3



With 165 m<sup>2</sup> the auditorium offers space for up to 220 people. It is an ideal conference space and perfect for presentations, trainings and film screenings. Thanks to the Hotel Oderberger restaurant next door, the AULA can also be used for celebrations/parties.

**Mögliche Präsentationstechnik: Beamer und Deckeninstallation, Tel. 743.**

The Auditorium opens directly into our garden, where you can enjoy coffee breaks and other catering.



ROOM QM



RENTAL HIGH SEASON (MAY-JUN + SEP-NOV)

RENTAL LOW SEASON

ROOM	QM	120	220	100	50	62	60	RENTAL HIGH SEASON (MAY-JUN + SEP-NOV)	RENTAL LOW SEASON
Auditorium	165	17 x 9,5 x 5,1 M	2100 €	1500 €	This public area is used for catering. Ask us about options for your event displays.				

Room Equipment:

The room rental includes pens and pads for your participants, presentation technology (beamer or smartboard depending on the room), cleaning before and after the event and waste disposal.



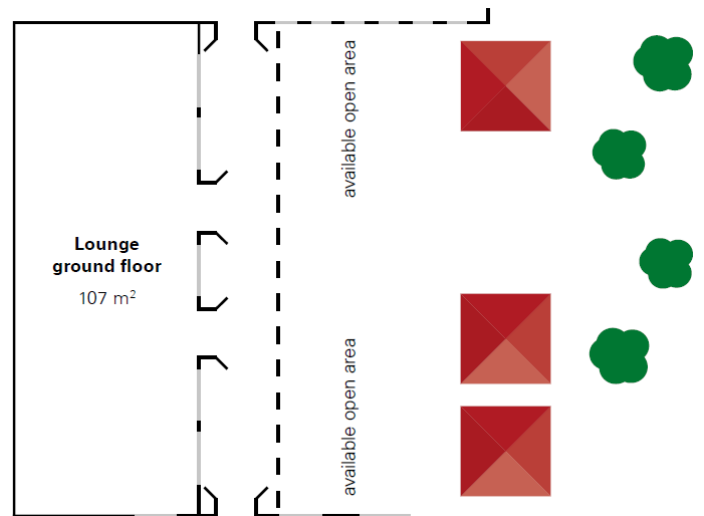
# THE LOUNGE, HOUSE 1



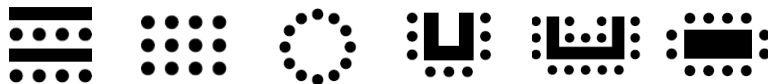
The Lounge is a sunny conference room with large window fronts opening to our courtyard – ideal for smaller conferences or celebrations. The Lounge is 107m<sup>2</sup> and seats up to 120 people.

**Available presentation technology:**  
Projector and ceiling mount

The Lounge opens directly onto our courtyard. In summer, this area is available for coffee breaks or catering.



ROOM QM



RENTAL HIGH SEASON (MAI-JUN + SEP-NOV)

RENTAL LOW SEASON

ROOM	QM	17 x 6,1 x 3,2 M	70	120	60	50	62	55	RENTAL HIGH SEASON (MAI-JUN + SEP-NOV)	RENTAL LOW SEASON
Lounge	107								1400 €	950 €

Foyer/ Lobby This public area is used for catering. Ask us about options for your event displays.

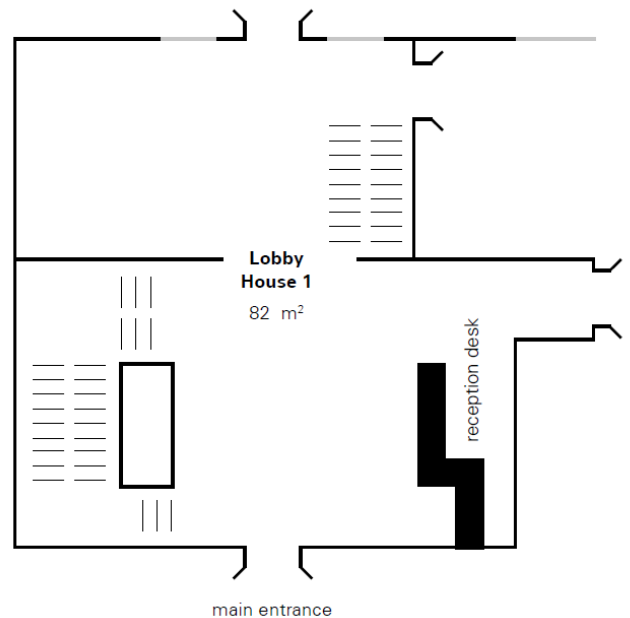
Room Equipment: The room rental includes pens and pads for your participants, presentation technology (beamer or smartboard depending on the room), cleaning before and after the event and waste disposal.



# THE LOBBY, HOUSE 1



The main entrance at Kastanienallee 82 leads directly to the reception area of our GLS Campus. This space is available for your event's registration desk, as a display space or catering area. Please ask us about availability.





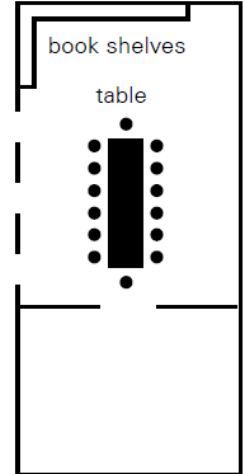


# LIBRARY, HOTEL ODERBERGER



Once the changing rooms of the baths, the Library now serves as an intimate event space with a unique atmosphere. The historic structure was carefully renovated and highlighted with modern design elements. Flexible seating options allow for all kinds of events with up to 50 guests

An Ideal choice for get-togethers, meetings or seminars in a more intimate setting. Ask for individualized seating options.



ROOM QM



RENTAL  
HIGH  
SEASON  
(MAI-JUN +  
SEP-NOV)

RENTAL  
LOW  
SEASON

Library	60	10 x 5 M	40	50	35	24	36	24	1000 €	700 €
---------	----	----------	----	----	----	----	----	----	--------	-------

Adjoining room 24

Room Equipment:

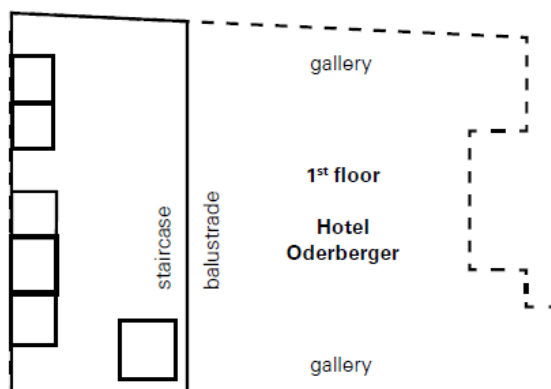
The room rental includes pens and pads for your participants, presentation technology (beamer or smartboard depending on the room), cleaning before and after the event and waste disposal.



# 1. FLORR, HOTEL ODERBERGER



Various conference rooms are available for rent at Hotel Oderberger. Our rooms are perfect for seminars, conferences, or together with our other areas of the hotel and event spaces.



ROOM	QM							RENTAL HIGH SEASON (MAI-JUN + SEP-NOV)	RENTAL LOW SEASON
611	20	-	22	15	-	-	8	400 €	250 €
612	18	-	20	14	-	-	8	400 €	250 €

Room Equipment:

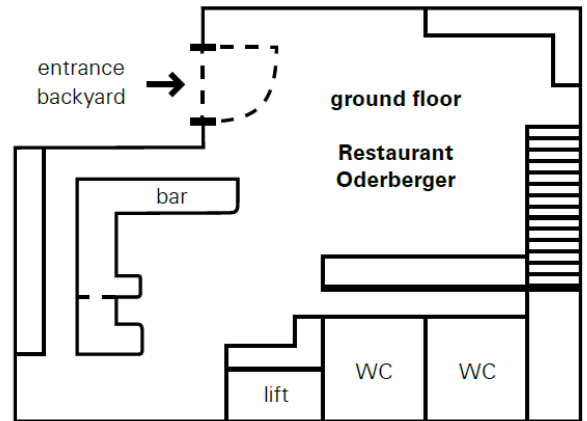
The room rental includes a whiteboard incl. markers, magnetic strips, pens and pads for your participants, presentation technology (beamer or smartboard depending on the room), cleaning before and after the event and waste disposal.

# RESTAURANT ODERBERGER



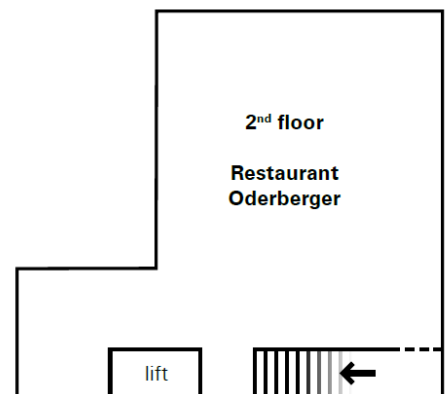
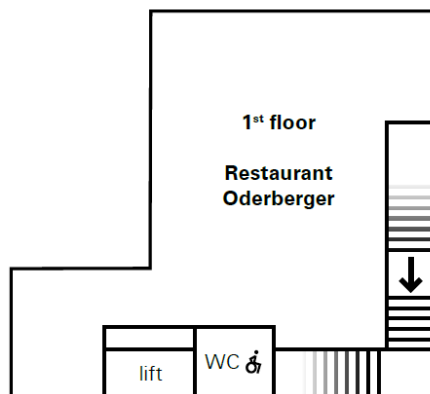
In the quiet backyard of the Hotel Oderberger is our beautiful Restaurant Oderberger located. Here is the possibility of your event on up to 3 floors for a seated lunch or Dinner.

QUANTITY OF PERSONS	ALL-INCLUSIVE PRICE SERVICE
up to 30	190 €
up to 50	290 €
up to 51	390 €



**ROOM HIRE FOR DINNER EVENTS**

The room rent for a dinner event is **1.500€** (service not included).





# TECHNICAL EQUIPMENT & SERVICES

---

## INDIVIDUAL SERVICES

<b>Smarboard</b>	available in all seminar rooms; ask for availability	125 €	day
<b>Laptop</b>		170 €	day
<b>Laptop Speakers</b>		20 €	day
<b>PA system Auditorium</b>	incl. cordless microphone; incl. instruction, performance check, communication in advance as well as transport; technical support not included	630 €	day
<b>PA system Lounge/Library</b>	incl. cordless microphone; incl. instruction, performance check, communication in advance as well as transport; technical support not included	550 €	day
<b>Microphone</b>	Cordless (with stand)	70 €	day
<b>Headset</b>		80 €	day
<b>Sound recording</b>	advance booking only; plus shipping costs	90 €	day
<b>Technician</b>	Min. 4 hours Daily rate max 10 hours of event	115 € 800 €	hour day
<b>Logistics service</b>	(installation and dismantling)	41 €	hour
<b>Lectern</b>		52 €	day
<b>Conference toolbox</b>		37 €	day
<b>Pinboard</b>	(available with paper cover by request)	27 €	day
<b>Flipchart</b>	Incl. Pad & 4 colored markers	27 €	day
<b>Stage element</b>	2 x 1 M, 50cm high	52 €	day



# INTERNET

**NETWORK: GLS-EVENT**  
**PASSWORD: event29netzwerk**

<b>WLAN</b> <b>up to 20 Mbit/s</b>	Internet access bandwidth of up to 20 Mbit/s (download & upload) GLS-Event	free
<b>up to 30 Mbit/s</b>	bandwidth of up to 30 Mbit/s (download & upload) user-defined WIFI login or GLS-Event individual VLAN (no outside users in network, secured bandwidth)	500 €
<b>up to 40 Mbit/s</b>	bandwidth of up to 40 Mbit/s (download & upload) user-defined WIFI login or GLS-Event individual VLAN (no outside users in network, secured bandwidth)	650 €
<b>up to 50 Mbit/s</b>	bandwidth of up to 50 Mbit/s (download & upload) user-defined WIFI login or GLS-Event individual VLAN (no outside users in network, secured bandwidth)	800 €
<b>up to 60 Mbit/s</b>	bandwidth of up to 60 Mbit/s (download & upload) user-defined WIFI login or GLS-Event individual VLAN (no outside users in network, secured bandwidth)	950 €
<b>up to 70 Mbit/s</b>	bandwidth of up to 70 Mbit/s (download & upload) user-defined WIFI login or GLS-Event individual VLAN (no outside users in network, secured bandwidth)	1100 €
<b>up to 80 Mbit/s</b>	bandwidth of up to 80 Mbit/s (download & upload) user-defined WIFI login or GLS-Event individual VLAN (no outside users in network, secured bandwidth)	1250 €

# GLS CAMPUS

## BERLIN EVENT LOCATION



### ADRESS:

**GLS Sprachenzentrum**  
Kastanienallee 82  
10435 Berlin – Prenzlauer Berg  
Tel: 030 780 089 260

### HOW TO GET HERE:

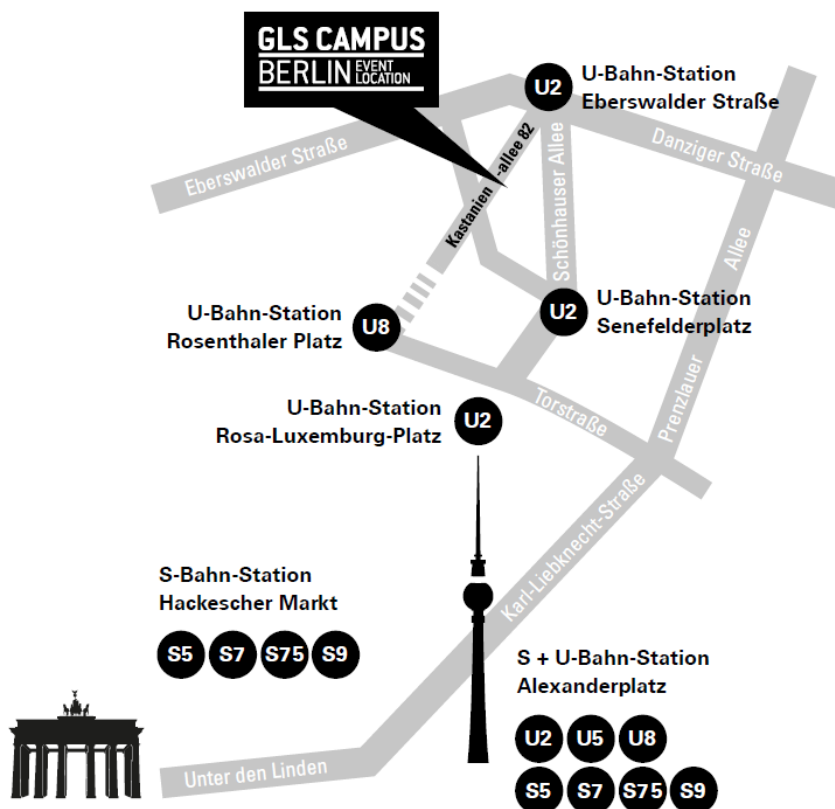
#### PUBLIC TRANSPORT (BVG)

The **tram** stop (serving **M1** and **M12**) right in front of GLS is called “Schwedter Straße”, with **trams** arriving every 10-20 minutes.

**U-Bahn** stations in walking distance are “Eberswalder Straße” (**U2**), “Senefelder Platz” (**U2**) and “Rosenthaler Platz” (**U8**).

#### FROM MAIN STATIONS „BERLIN HAUPTBAHNHOF”

Take tram **M10** to „Eberswalder Straße”.  
Take tram **M1** or **M12** to “Schwedter Straße” – or enjoy the 5 minute walk to GLS!



### BY CAR

Follow signs to Mitte, until you get to Alexanderplatz. Take Karl Liebknecht Straße (extension of Unter den Linden). Go straight ahead (the street is now called Prenzlauer Allee) for approx. 2km. Take a left onto Danziger Straße. At the large crossing of Eberswalder Straße (with the raised U-Bahn station “Eberswalder Straße”), turn slightly left onto Kastanienallee. GLS is located approx. 300 m ahead on the left.

### PARKING

We recommend parking at Kulturbrauerei in Sredzkistraße (1,50 € per hour). Please note that there is very limited parking on our premises (advance booking only).

### PARKGEBÜHREN

GLS Campus: 20.00 € per day (limited availability, advance booking only with license plate nr.). Entrance in Choriner Straße, across nr. 36, keep to the left of the building.

Hoter Oderberger:

25.00 € per day (limited availability, advance booking only with license plate nr.) Entrance left of Hotel Oderberger, ring the bell and register at the barrier, you will be directed to your spot.

Due to our limited parking capacities, all vehicles without proper booking & registration will be towed at owner’s expense. **We kindly ask you to inform your participants and guests. Thank you for your cooperation.**



# TERMS & CONDITIONS

## LOADING & UNLOADING FOR EVENTS

Loading & unloading for your event is possible if you have informed us in advance and follow commercial loading times. Not all areas of our premises can be accessed by car – we are happy to provide handcarts.

## STORAGE

If you would like to send material for your event in advance, we kindly ask you to do so in a timely manner as we have very limited storage capacities. Please inform us in advance and send your marked package to the proper location:

### GLS Campus Berlin

GLS Campus Berlin, z. Hd. Frau/Herr .....  
 (ihre Veranstaltungsbetreuung vom Haus)  
 VA Name + VA Datum  
 Kastanienallee 82  
 10435 Berlin  
 oder

### Hotel Oderberger

Hotel Oderberger, z. Hd. Frau/Herr .....  
 (ihre Veranstaltungsbetreuung vom Haus)  
 VA Name + VA Datum  
 Oderberger  
 Str. 57–59  
 10435 Berlin

## ACCOMODATION

We are happy to welcome you in one of our hotels on campus. For more information on availability and rates, visit [www.hotel-die-schule.de](http://www.hotel-die-schule.de) or [www.hotel-oderberger.berlin](http://www.hotel-oderberger.berlin), or call us at

### Hotel „Die Schule“

T 030 / 7800 89 260  
[info@hotel-die-schule.de](mailto:info@hotel-die-schule.de)

### Hotel Oderberger

T 030 / 7800 89 760  
[info@hotel-oderberger.berlin](mailto:info@hotel-oderberger.berlin)

We are also happy to recommend other accommodation options in the vicinity.

## LANGUAGE CLASSES FOR YOUR STAFF

We also organize language classes for your business – whether in house at your location, or on site here on campus.

Visit [gls-sprachenschule.de](http://gls-sprachenschule.de) for more information.

## TERMS OF BOOKING AND AGB

Terms of cancellation  
 Terms of payment  
 Further information  
 General business terms

For further details concerning the content above please click here:

[Terms of Booking and AGB — GLS Campus Berlin](#)

## BRUTTOPREISE

All prices quoted are gross prices including the applicable VAT

## CONTACT

GLS Event Management  
 T 030 / 7800 89 551  
[info@gls-campus-berlin.de](mailto:info@gls-campus-berlin.de)  
[www.gls-campus-berlin.de](http://www.gls-campus-berlin.de)

# POOLHall, HOTEL ODERBERGER



For special events like galas, weddings, company parties or anniversaries, ask us about our Oderberger Event Folder and a personal offer!







# GREEN MEETINGS

Sustainability is an important part of our corporate strategy - we would like to make our contribution as a company and team. We have had our efforts in the area of sustainability certified with the Green Sign sustainability seal for the Hotel Oderberger.

## CATERING

According to the principles of organic, regional, seasonal and fair. Fresh products from the region protect the environment through short transport routes and support the regional economy.

## SOCIAL RESPONSABILITY

The spectrum of measures ranges from noise and youth protection to equal rights and barrier-free access.

## PROCUREMENT

When procuring products and services, we ensure that production and delivery are as environmentally friendly and socially acceptable as possible.

## COMMUNICATION

Information on sustainability measures not only generates awareness of the issue of sustainability, but also encourages imitation.

## WASTE MANAGEMENT

Through a well thought-out procurement and waste concept, we prevent waste from arising in the first place. All unavoidable waste is recycled through separate disposal.

## ENERGY

Factors such as building insulation, the purchase of green electricity, lighting, sound, media and stage technology, heating and air-conditioning and air conditioning systems offer numerous starting points for increasing energy efficiency and saving energy.

## WATER & CLEANING

Responsible use of water as a resource before, during and after the event.

## MOBILITY

Events bring people together - but travel to and from the event and the transport of goods also create emissions. Our location is in the heart of Berlin and is very easy to reach by public transport.



We have compiled all the detailed and further information on our sustainable events for you in the section **Green Meetings**